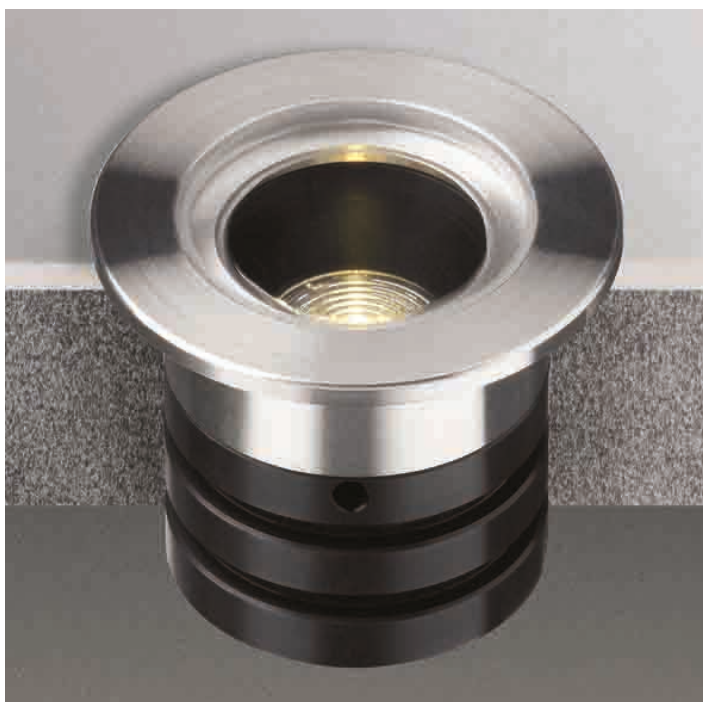


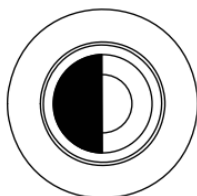
# LD56



**IP68** 

## **/GS56 - Glare shield**

An optional glare shield is now available to further reduce glare from the LED and optic. This is really only necessary in narrow details where people are going to be directly over the fitting. This does not reduce the light on the lit surface (wall) but will cut out some light onto the ceiling



## **General Information**

A small, tough, low glare fitting which can be used for uplighting, wall washing or step lighting. It's sealed to IP68 so can be used outside and the integral anti-wicking barrier increases protection against water ingress due to incorrect IP rated cable connections.

It has an optional glare shield accessory for even lower glare.

## **Output Options**

- 1.2W LED at 350mA
- 1.7W LED at 500mA
- 2.4W LED at 700mA

## **Lamp Options**

- Warm White (3000k)
- Cool White (5000k)
- Blue
- Green
- Red
- Amber

## **Lens Options**

- 12° narrow spot
- 31° medium
- 48° wide
- 36° x 12° oval

## **Finishes**

- Polished or brushed stainless steel 316
- Powder coated white or black (interior use only)
- Polished and passivated stainless steel (for marine environments)
- Solid Bronze or Antique Bronze (flamed solid bronze)

## **Accessories**

- /GS56 Glare Shield

## **Fixing Options**

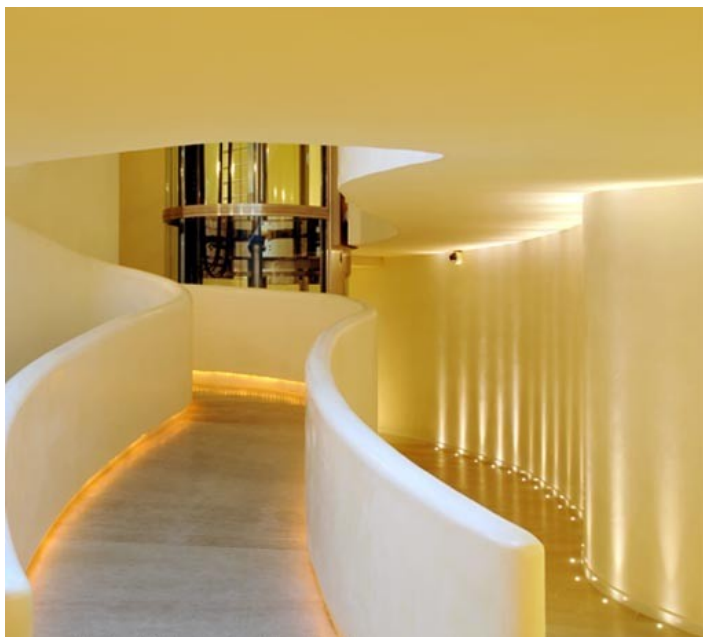
- /476 First fix sleeve and 'O' Rings
- /SC Spring Clips

## **Driver Options**

Use with 350mA, 500mA or 700mA constant current LED drivers. 1-10V, DMX, DALI, Mains dimmable or non-dim.

## **Notes**

- Wire in series.
- Observe correct polarity. Do not wire live.



Unit 9, Severfield Close, Thirsk Industrial Park, THIRSK, YO7 3BX  
web: [www.brilliantlighting.co.uk](http://www.brilliantlighting.co.uk)  
tel: 01845 525664

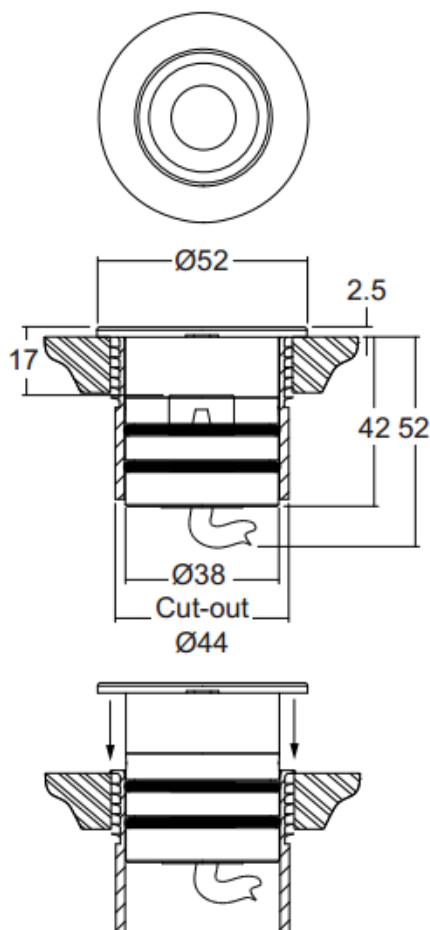
Beam Angles 12°, 31°, 48°, 36° x 12°

LED type 1 x Cree XPG

Colour temperature	3000K			5000K		
Drive Current (mA)	350	500	700	350	500	700
LED power* (W)	1.2W	1.7W	2.4W	1.2W	1.7W	2.4W
CRI (typical)	93	93	93	80	80	80
Forward voltage (V)	3.0V	3.2V	3.4V	3.0V	3.2V	3.4V
Delivered lumens (L <sub>100</sub> )	68	93	114	110	153	190
Lumens per circuit watt**	57	55	48	91	90	79

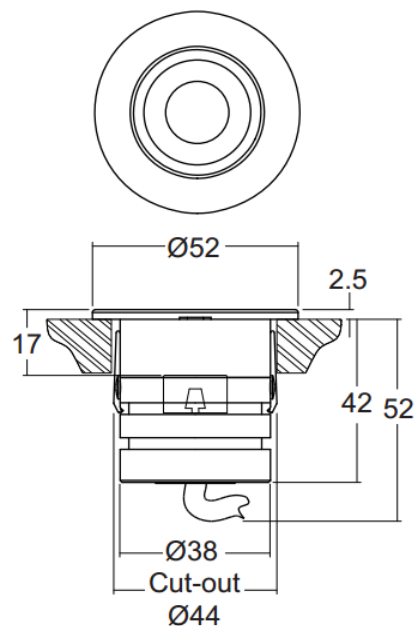
LED lifetime (to 70%  
lumen maintenance)

50,000hrs at a max ambient temperature of 35°C  
(if specifying fitting in ambient temperatures of up  
to 45°C run at 500mA max, LD56-500)



#### /476 - 'O' rings and sleeve

A more robust and water tight method of fixing,  
for in ground applications



#### /SC - Spring clip fixing

Useful for plinth or downlight applications