

WARNING: DO NOT USE NORMAL LOW VOLTAGE TRANSFORMERS WITH LEDs.

All LED fittings are tested before dispatch. It is not necessary to check them on site. Do not power up until fittings are wired correctly.

INSTRUCTION LEAFLET






LD40

LED Recessed Wall Light

This product should be installed by a qualified electrician in accordance with all current, local legislation. For the UK, the current edition of the IEE Wiring Regulations and European Standard IEC 60364.

SPECIFICATION

LED recessed luminaires are class III  for Safety Extra Low Voltage supply  **350mA** constant current supply.

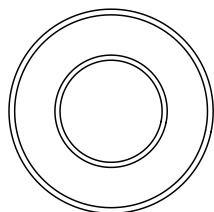
Suitable for mounting on normally flammable surfaces. 

This fitting is **IP67** rated.

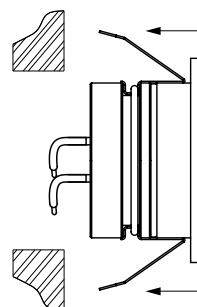
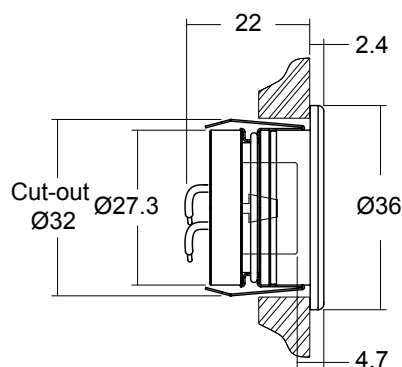
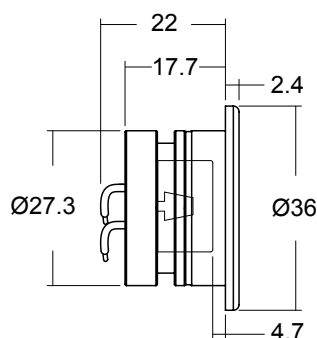
Lumen Maintenance: 50,000 hours L70 at Max Ambient of 35°C.

LD40 is available in various power outputs options	
Product & LED output code	Power Output
LD40 - 350	350mA 1.2W

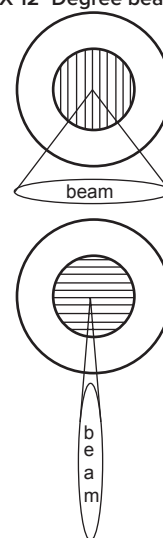
DIMENSIONS



/SC Spring Clips



Note
LEDs with OB lens
(36° X 12° Degree beam)



WIRING

Do not power up until fitting is wired correctly! Constant current LEDs must be wired in series, polarity is critical! Please refer to specified driver sheet for details on the minimum and maximum number of LEDs per circuit.

Single Colour LEDs		
Colour of Cable	Red	Black
Polarity	+	-

SEE CONSTANT CURRENT WIRING SHEET FOR IN SERIES WIRING DIAGRAM

IMPORTANT

Make sure that all cables and connections are securely connected before switching on the power. Do not switch on the power source prior to making these connections as this will result in the LEDs being overvolted, which can lead to failure of the LEDs and/or the driver. If the LEDs do not work upon power up, turn off the power source immediately and check the polarity of the wiring.

MAINTENANCE

LAMPS: Non Replaceable.
Clean with soft cloth.

This leaflet should be issued and retained by the end user.