

LD43, LD43W & LD43A

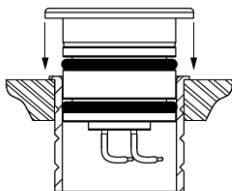
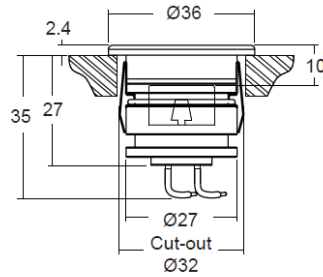
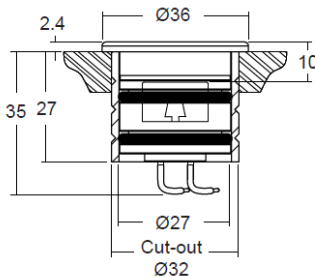
Miniature recessed LED Uplight



LD43



LD43A, LD43W



Physical dimensions are common across all three models

Driver Options

Available with Switch, 1-10V, DMX, Dali or Mains dimmable drivers.

General Information

The LD43 is a family of minimal depth, miniature LED uplighters with great light output from a very compact fitting with a number of anti-glare features.

LD43 features a recessed LED position for reduced glare.

LD43W adds an integral glare shield to reduce glare further.

LD43A combines the integral glare shield with a 20° tilt film to angle the light towards the lit surface

Fixing:

Two options are available for fixing - spring clips or 'O' rings with /480 fixing sleeve

Lamp Information:

Cree XPG: 2 output options - 1.2W @ 350mA (LD43W/A-350) and 1.7W @ 500mA (LD43W/A-500)

Beam / lens angle options

- 12° narrow spot
- 31° medium
- 48° wide
- 36° x 12° oval (LD43 only)

LED colour options

- Extra warm white (2700K)
- Warm white (3000k)
- Cool white (5000K)
- Blue, Green, Red or Amber - fixed colour

Materials:

- Stainless steel 316 and hard anodised aluminium
- Polished and passivated stainless steel (for marine environments)
- Antique bronze (flamed solid bronze)

IP Rating:

IP66

Accessories:

- /480 fixing sleeve and 'O' rings
- /SC spring clip fixing

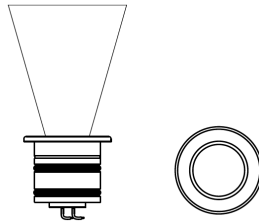


LD43, LD43W & LD43A

Miniature recessed LED Uplight

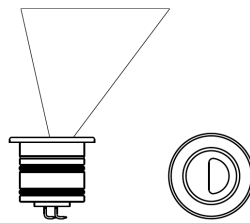


Light output diagrams



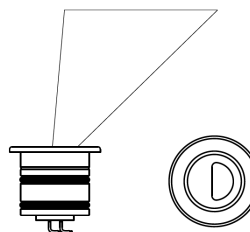
LD43

Lens and LED assembly are recessed into the body by 10mm



LD43W

Body has a machined half moon in front of the lens to reduce glare. Please note that the oval lens can not be used in this variant.



LD43A

Body has a machined half moon in front of the lens to reduce glare plus an integral 20° refractor film which angles the light. Please note that the oval lens can not be used in this variant.

Colour temperature	2700K* / 3000K		5000K	
	Drive Current (mA)	350	500	350
LED power** (W)	1.2W	1.7W	1.2W	1.7W
CRI (typical)	93	93	75	75
Forward voltage (V) ₁₀₀	3.0V	3.2V	3.0V	3.2V
Delivered lumens (L ₁₀₀)***	88	120	107	146
Lumens per circuit watt	73	71	89	86

*2700K lumen output is 12% lower than the 3000K figure listed

4000K lumen output is 14% higher than the 3000K figure listed (80 CRI)

**LED wattage includes losses associated with using an 85% efficient driver

***LD43A and LD43W lumen output will be 40% less due to the glare shield