

LD95



General Information

The LD95 is a miniature floor or ceiling mounted spotlight. It has been designed for applications where a recessed fitting cannot be installed, and a discreet, non obtrusive solution is required. It features a deep recessed LED and optional glare shield removing the need for a large cowl. Using the latest in LED technology, with a typical 93 CRI in 3000K warm white, the LD95 offers an excellent diffused beam shape from a range of optics. The LD95 incorporates an integral antiwicking barrier for added protection and is available with a choice of switch, 0-10V, DMX, Dali or mains dimmable remote drivers.

Output Options

- 1.2W LED at 350mA
- 1.7W LED at 500mA
- 2.4W LED at 700mA

LED Colour Options

- 2700K
- 3000K
- 4000k
- 5000K

Beam Options

- 12° narrow spot
- 31° medium
- 48° wide
- 36° x 12° oval

IP Rating

IP66

Finishes

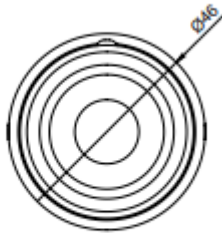
Powder coated Matt Black or Matt White (RAL 9016) bronze.

Driver Options

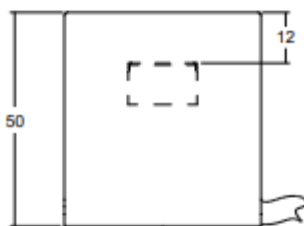
Use with 350mA, 500mA or 700mA constant current LED Drivers.
1-10V, DMX, DALI and Mains dimmable, or non-dim.

Dimensions

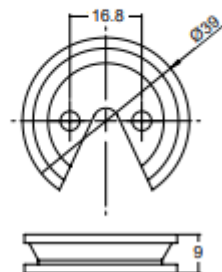
Top View



Side View



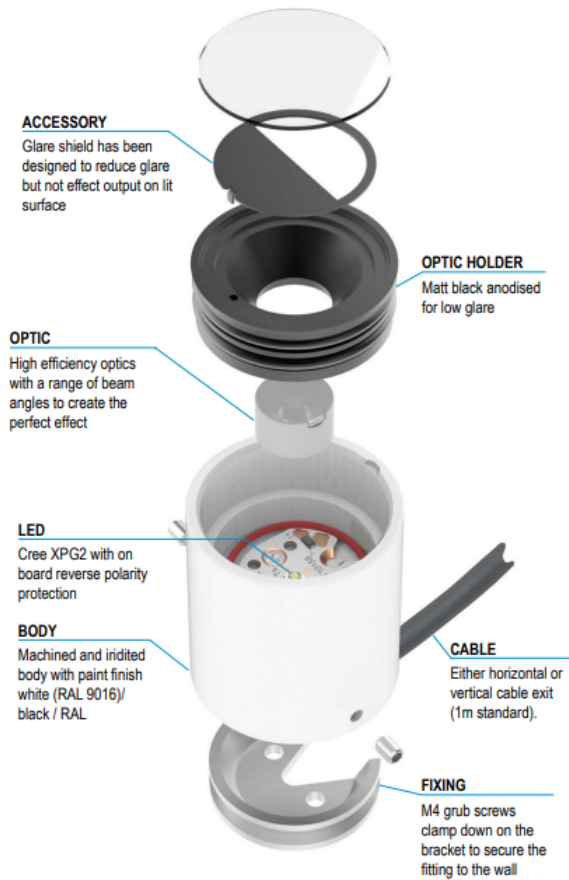
Mounting plate



Notes

Wire in series and observe correct polarity
Do not wire 'live'

Product Parts



Order Codes and Options

Product code	LED colour	Lens angle	Accessory	Finish
LD95 - 350 - 500 - 700	<input type="checkbox"/>	<input type="checkbox"/>	<input type="checkbox"/>	<input type="checkbox"/>

Example: LD95-700 / LW30 / MB / GS / White

Product codes with output options

1.2W LED at 350mA	LD95-350
1.7W LED at 500mA	LD95-500
2.4W LED at 700mA	LD95-700

LED colour options

Extra Warm White (2700K)	/LW27
Warm White (3000K)	/LW30
White (4000K)	/LW40
Cool White (5000K)	/LW50

Beam / lens angle options

12° narrow spot	/NB
31° medium	/MB
48° wide	/WB
36° x 12° oval	/OB

Accessory

Glare shield (GS56T)	/GS
----------------------	-----

Finish options

Body - Paint finish white (RAL 9016) / black / RAL
For marine environments specify powder coat

Use with 350mA, 500mA and 700mA constant current LED drivers

We have a wide range of dimmable LED drivers, 0-10V, DMX, DALI and Mains dimmable.

Please see the downloads section on our website:

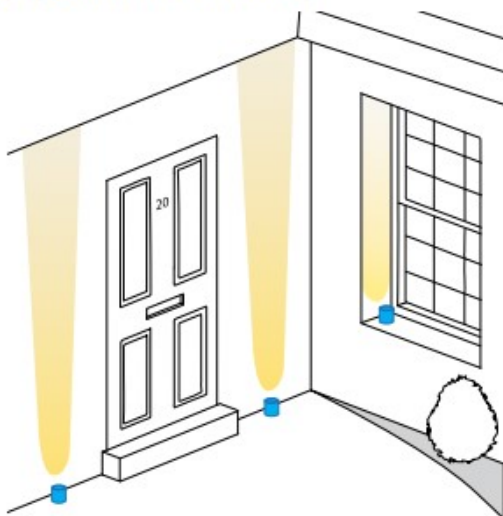
To run 1-14 LD95-350 in series use a TXDEL350D (0-10V dimmable)

To run 1-14 LD95-500 in series use a TXDEL500D (0-10V dimmable)

To run 1-13 LD95-700 in series use a TXDEL700D (0-10V dimmable)

Applications

LD95 is incredibly versatile, allowing it to be used in a variety of applications from lighting window reveals to wall and floor washing.



Accessories

/GS - Glare shield

An optional glare shield is available for the LD95 to further reduce glare from the LED and optic. This does not reduce the light on the lit surface (wall) but will cut out some light onto the ceiling or floor.

