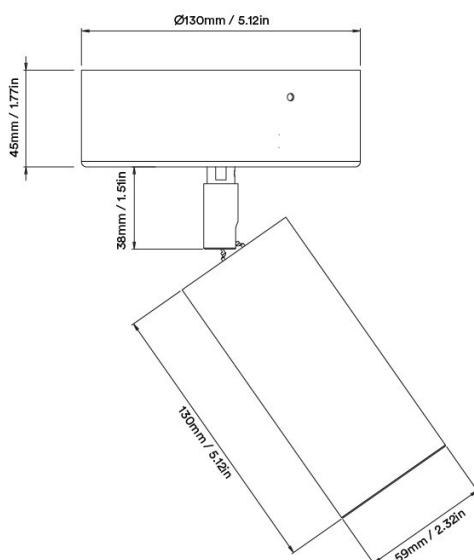
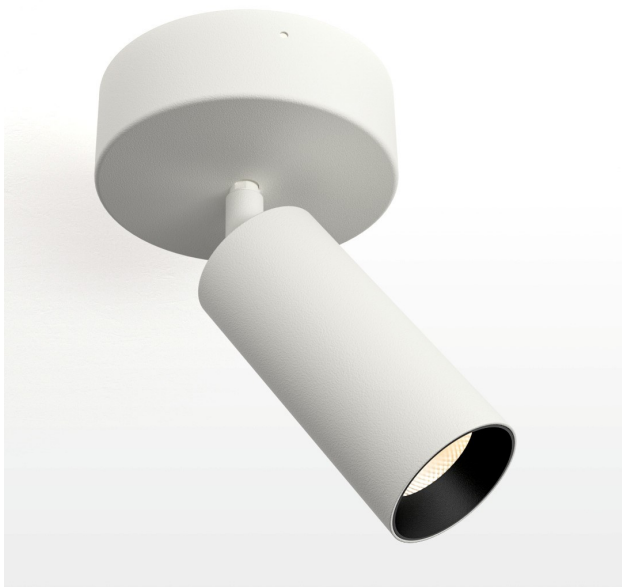


AIR Integrated Surface mounted spotlight with integral driver



Overview

Surface mounted IP54 rated spotlight with over 90° tilt with integral driver housed in the base

Finishes

Available in a range of standard and bespoke finish options for the whole luminaire. The standard white bezel is RAL9010 fine texture with 20% gloss, however we can offer any other RAL colour (additional charges and setup charges may apply).

The fitting is also available in Polished Chrome, Brushed Chrome, Polished Brass, Antique Brass, Polished Copper, Antique Copper and Antique Bronze.

The anti-glare baffle is Black as standard but can be any RAL paint or a selection of anodised or plated finish (additional charges and setup charges may apply).

Installation Notes

- Cut hole in ceiling as per cut-out in diagram.
- Wire luminaire cable to Orluna certified driver, ensuring correct polarity (red to positive terminal [+] and black to negative terminal [-]).
- With mains supply switched off, connect driver to mains supply (to avoid damaging the luminaire, do not hot-wire).
- Feed luminaire into cut-out by rotating clockwise pulling the light fitting fully up into the ceiling, ensuring Ø250mm around luminaire and driver is left clear of insulation.
- Ensure sufficient clearance to accommodate product tilt.

Fixing Method	Ceiling Rose
Min Ceiling Thickness	5mm
Max Ceiling Thickness	28mm
Max Driver Distance	20m

Driver Options

Non-dim driver
Mains dimming driver
0-10v dimming driver
DALI driver

Fitting Options

Anti-glare Honeycomb Louvre
Frosted Lens
Plaster in plate

LED Colour Temperature

2700K (very warm white)
2938K (warm white)
4000K (by request only)

IP Rating

IP54 as standard.

50,000 hours to L90 and a 5 year fitting warranty.
Designed and made in the UK.



Unit 9, Severfield Close, Thirsk Industrial Park, THIRSK, YO7 3BX
www.brilliantlighting.co.uk
01845 525664

AIR Integrated Surface mounted spotlight with integral driver

Origin Engine for superior light

When you've created a beautiful space, you want to faithfully enhance every shade within it. The Origin family of downlights, uplights, spots and linear lights all use a bespoke phosphor LED, which gives exceptionally high colour rendering and the best red rendering worldwide (CRI: 98 & R9: 99). Reds are highly important in accurate representation of many colours, including true whites, so the Origin makes colours look as beautiful as intended.

2700K

	Soft				Speciality
	<i>Medium</i>	<i>Wide</i>	<i>Flood</i>	<i>Wash</i>	<i>Crisp</i>
Beam Width	28°	43°	53°	60°	37°
Initial Lumens	1164	1164	1164	1164	1164
Engine Lumens	975	968	935	942	970
Engine Lm/W	86	85	82	83	85

Voltage	34V
Drive Current	300mA
Circuit Power (typ)	11.4W

3000K

	Soft				Speciality
	<i>Medium</i>	<i>Wide</i>	<i>Flood</i>	<i>Wash</i>	<i>Crisp</i>
Beam Width	29°	44°	53°	59°	37°
Initial Lumens	1252	1252	1252	1252	1252
Engine Lumens	1013	1026	999	942	1013
Engine Lm/W	89	90	88	89	90

Voltage	34V
Drive Current	300mA
Circuit Power (typ)	11.4W

